

The logo for 'Jana' is rendered in a bold, italicized, sans-serif typeface. The letters are white with a thick orange outline. The background of the entire image is a dark blue with a subtle topographic map pattern of white contour lines. In the lower half, there is a large, stylized wave graphic composed of many thin, parallel white lines that curve and flow across the frame.

Jana

2024 ***DESIGNS***
SPRING / SUMMER

M's Saguaro Jacket

-23A110015-1

-Features-

- * Men's 3L high-performance mountaineering jacket with color-blocking design
- * 3L bio-nylon ripstop at the torso and 3L re-PET fabric at the upper & sleeves are from Xpore technology with excellent waterproofness and moisture vapor permeability
- * YKK FIX A SHAPE® zipper provides a smooth curve at the front collar without compromising comfort and mobility
- * Hood along with a cap-like visor and cordlocks for adjustments
- * Laser-cut venting holes at the collar and armpit zippers for releasing body heat
- * Articulated forward-bending sleeves for great movement
- * Chest pocket with an integral garage and bellow construction for extra space
- * Welded side pocket flaps for a clean finish and a sharp look
- * Soft lycra cuff with built-in thumbhole gripper
- * Reflective logos for a stylish look and safety concern



Fabric: 24W-1001

Composition:

100%Bio Nylon Ribstop Full Dull

Finish: C0 DWR(80/10), W/P(15000),

MVP(10000)

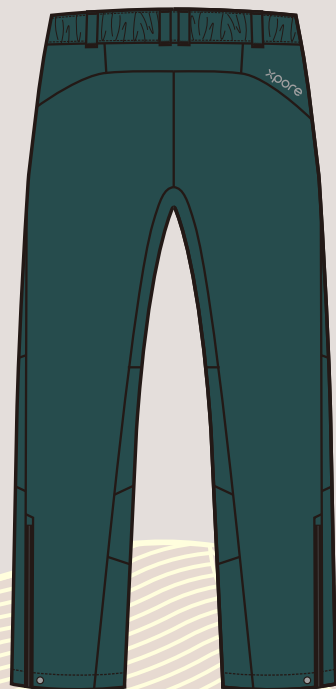
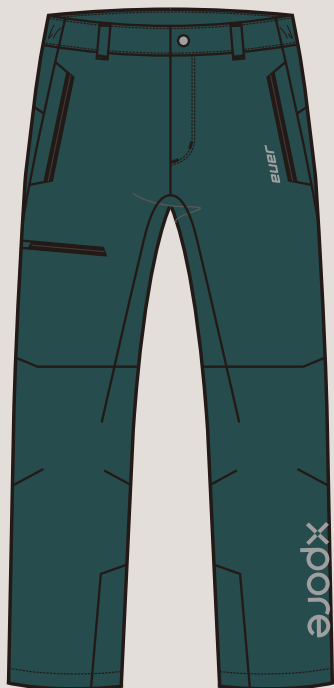
Fabric: 24W-1002

Composition: 100% RPET

Finish: C0 DWR(80/10), W/P(20000),

MVP(10000)

Mountaineering & Hiking



-Features-

- * Men's 3L high-performance mountaineering pants with technical cutting
- * 3L 100% re-PET fabric from Xpore technology with excellent waterproofness and moisture vapor permeability
- * Zipped front fly with elastic construction at back for a comfortable fit around the waist
- * YKK No.3 AquaGuard® zipper at pockets and leg opening
- * 2 side pockets and a thigh pocket for personal belongings
- * Articulated knee with darts for great movement
- * Leg opening with hem adjustment for multiple uses
- * Double-layer fabric welded at bottom inseam for abrasion resistance
- * Reflective logos for a stylish look and safety concern

Fabric: 24W-1002

Composition: 100% RPET

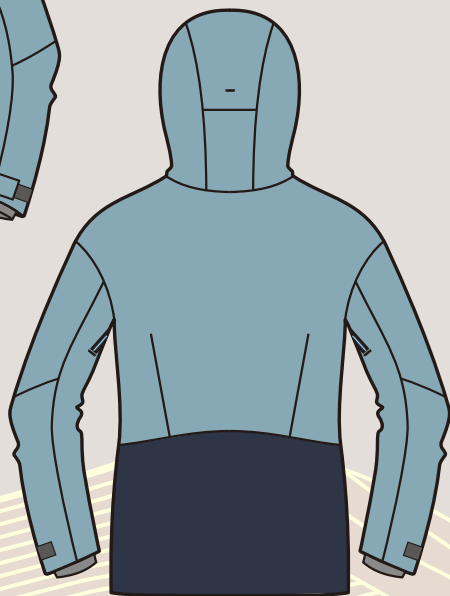
Finish: C0 DWR(80/10), W/P(20000),
MVP(10000)

Mountaineering & Hiking

W's Hesperocallis Jacket -23A110016

-Features-

- * Women's 3L high-performance mountaineering jacket with color-blocking design
- * 3L re-nylon at the upper and 3L bio-nylon ripstop at the bottom are from Xpore technology with excellent waterproofness and moisture vapor permeability
- * YKK PRIFA® AquaGuard® zipper at pockets and armpit for maintaining both function and appearance
- * Hood along with a cap-like visor and cordlocks for adjustments
- * Armpit zippers for releasing body heat
- * Articulated forward-bending sleeves for great movement
- * Chest pocket with bellow construction for extra space
- * Welded side pocket flaps for a clean finish and a sharp look
- * Soft lycra cuff with built-in thumbhole gripper
- * Reflective logos for a stylish look and safety concern



Fabric: 24W-1003

Composition: 100%Nylon Recycle

Dobby Mechanical Weft Stretch

Finish:C0 DWR(80/10), W/P(15000),

MVP(10000)

Fabric: 24W-1004

Composition:

100%Bio Nylon Ribstop Full Dull

Finish: C0 DWR(80/10), W/P(15000),

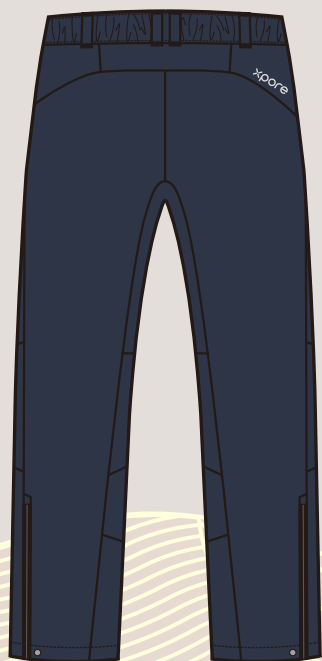
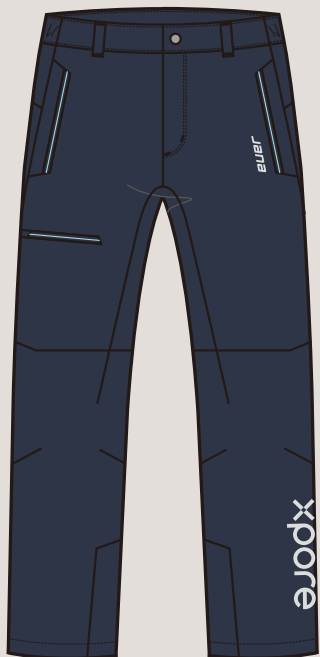
MVP(10000)

W's Callistemon Pants

-23B110018

-Features-

- * Women's 3L high-performance mountaineering pants with technical cut
- * 3L 100% bio-nylon ripstop fabric from Xpore technology with excellent waterproofness and moisture vapor permeability
- * Zippered front fly with elastic construction at the back for a comfortable fit
- * YKK PRIFA® AquaGuard® zipper at pockets for maintaining both function and appearance
- * 2 side pockets and a thigh pocket for personal belongings
- * Articulated knee with darts for great movement
- * Leg opening with hem adjustment for multiple uses
- * Double-layer fabric welded at the bottom inseam for abrasion resistance
- * Reflective logos for a stylish look and safety concerns



Fabric: 24W-1004

Composition:

100%Bio Nylon Ribstop Full Dull

Finish: C0 DWR(80/10), W/P(15000),

MVP(10000)

Mountaineering & Hiking

M's Salvia Jacket

-24A030055

-Features-

- * Men's 3L high-end hiking jacket with well-arranged ergonomic cut lines for a better fit
- * 3L re-polyester fabric from Xpore technology with excellent waterproofness and moisture vapor permeability
- * YKK FIX A SHAPE® zipper at CF maintains the best shape around the collar area
- * Laser-cut panel at the back provides airflow and can release body heat
- * Front and back adjustable hood with a unique storable hood design at the back
- * Pre-shaped sleeves with hook and loop fasteners for wind-blocking
- * 2 large side pockets and 2 inner and outer chest pockets for personal belongings
- * Easy-to-use hem adjustment system to enhance wind and water-blocking ability



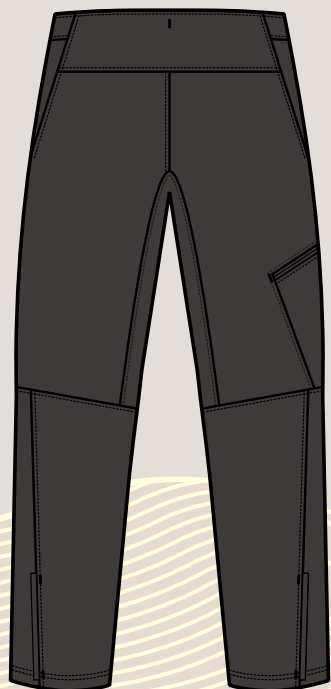
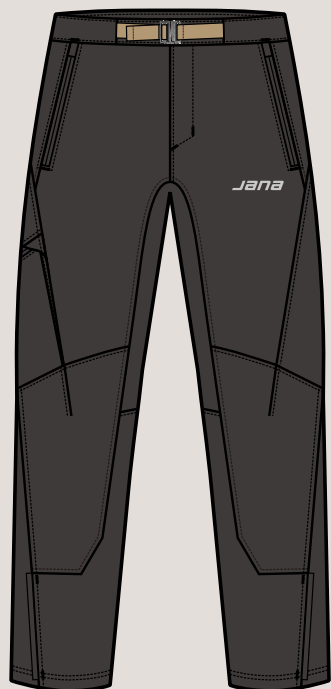
Fabric: 23W-1042

Composition: 100% Recycle Polyester

Finish: CO DWR(80/10), W/P(15000),

MVP(10000)

Mountaineering & Hiking



M's Harpagophytum Pants

-24B030056

-Features-

- * Men's softshell hiking pants made from durable, Anti-UV, four-way stretch nylon fabric, offering excellent wind and abrasion resistance
- * Provides breathability in hot and humid conditions along with the environmental benefits of PFC-free DWR
- * Loose-fitting pants with articulated knees, zips up at the bottom hem to form a unique cocoon-like shape
- * Well-designed cut lines offer not only a fashionable look but also a comfortable fit
- * Includes 2 side pockets and 1 large cargo pocket for personal belongings
- * Features a partially hidden waistband for adjustments, ensuring a better fit

Fabric: 24W-1013

Composition:

90%Nylon66+10%Lycra

Finish: C0 DWR, Durable Anti-UV,
Wind & Abrasion Resistance

Mountaineering & Hiking

M's Tirucalli Jacket -24A030057

-Features-

- * Men's 2.75L rain jacket is a lightweight layer designed for golfers seeking low weight and stretchability
- * Toray's 30D nylon fabric, with 3D dry finish and PFAS-free DWR, ensures comfort and durability
- * The FLATKNIT® AquaGuard® zipper achieves a lightweight, thin, and soft appearance on the center front
- * Two-way adjustable hood allows for a perfect fit around the head
- * Welded mesh with contrasting color under the back yoke offers better air convection and gives a vivid look
- * The semi-elastic waist with ladder film ensures a neat finish and waterproof protection
- * The special cut-front pocket provides structure and ample storage space
- * The shell cuff tab with soft velcro adjustment fits the wearer's wrist
- * Adjustment system on both sides ensures a good fit for the body



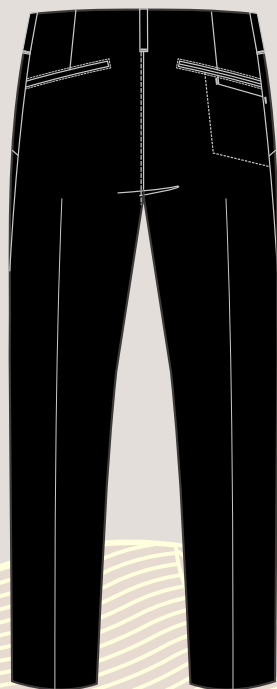
Fabric: 24W-1012
Composition: 100% Nylon
Finish: C0 DWR, W/P(20000),
MVP(20000)

M's Baileya Pants

-24B030058

-Features-

- * Men's golf pants with a semi-fit, classic outline, and unique details
- * Constructed from softshell technical nylon fabric offering water repellent, windproof, and anti-UV functions
- * Reflective film at various spots creates a detailed look
- * A slide button at the center front ensures easy wear
- * Two slanted side pockets with bellows provide extra volume for personal belongings
- * One coin pocket with colored film for decoration
- * Asymmetrical back pocket design with a simple pocket on the left and a combined zip and attached pocket on the right



Fabric: 24W-1014

Composition:

90%Nylon+10%OP

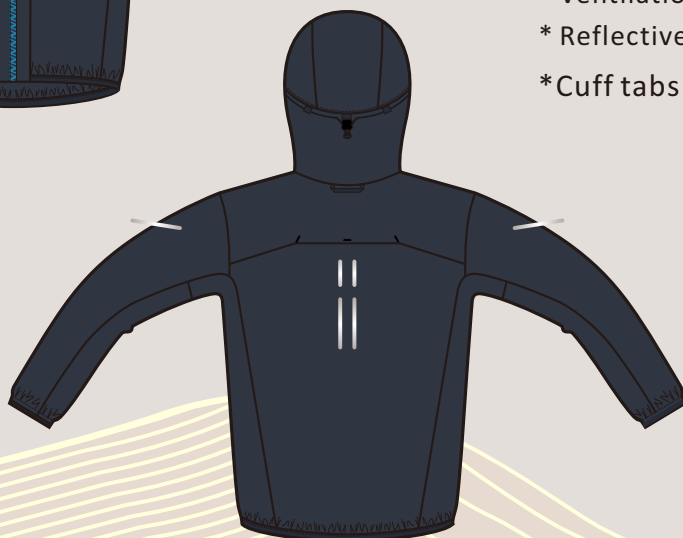
Finish: Wickability, Dryability,

Durable Anti-UV

M's Yucca Jacket -24A030059

-Features-

- * Men's 3L running jacket made from ultra-light stretchable fabric with gentle hand feel
- * Redesigned the previous running jacket with upgraded details
- * Used YKK's eco-friendly #5 AiryString® tapeless zipper at the CF for increased flexibility and weight reduction
- * Minimal cutting lines provide a clean look
- * Simple and lightweight hood with an exposed adjustment system for good function and a nice fit
- * Can be easily packed into the reversible chest pocket for portability
- * Cuffs and hem with neat elastic binding provide a better fit and great comfort
- * Ventilation system at the back releases body heat while running
- * Reflective films at the front shoulder seams, arm, and back for safety.
- * Cuff tabs with self fabric construction and velcro for easy to use.



Fabric: 18W-1001

Composition:

N100/P100

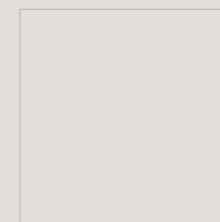
Finish: W/P(20000),

MVP(44000)

W's Opuntia Jacket -24A030060

-Features-

- * Women's 3L running jacket made from ultra-light fabric with translucent appearance
- * FLATKNIT® AquaGuard® zipper is both ultra-lightweight and offers outstanding water resistance
- * CF seam with self-fabric as seam tapes, giving a neat and clean look
- * The whole garment can be stored into the back collar and carried around for more portable function
- * Cuffs and hem with elastic provide a better fit and great comfort
- * Ventilation system at the underarm and back releases body heat while running
- * Reflective and fluorescent films at the right shoulder for safety concern
- * Adjustment system on both sides to fit the body well



Fabric: 24W-1005
Composition:
100% Nylon

M's Tecoma Jacket

-23A060081

-Features-

- * Men's 2.5L lightweight, packable cycling jacket made from Xpore nylon ripstop fabric with great waterproofness and moisture vapor permeability
- * YKK #3 AquaGuard® zippers at the front opening, chest, and back
- * An adjustable hood with a laminated visor can easily roll up with snap tab construction
- * Reflective film at visible positions for the rider's safety in low light
- * Grown-on collar for a comfortable fit at the neck
- * Long and pre-bending sleeves for an articulated fit
- * Partially elasticated cuff with a soft and fine hand feel
- * Ventilation at the armpit and back enhances airflow when riding
- * Long rear tail of the jacket to cover the rider's bottom when bending
- * Self-storable back pocket with an easy carrying buckle inside
- * Cuff tabs with sell fabric construction and velcro for easy to use.



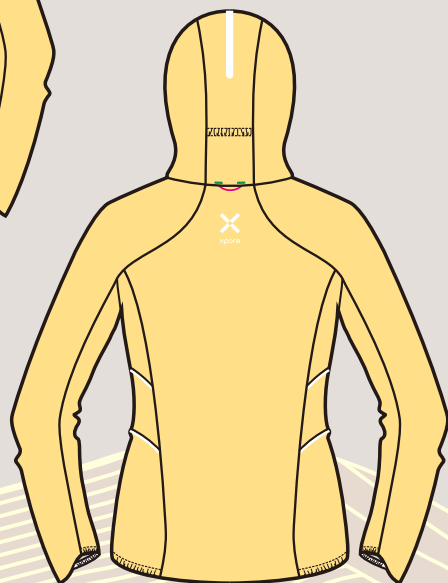
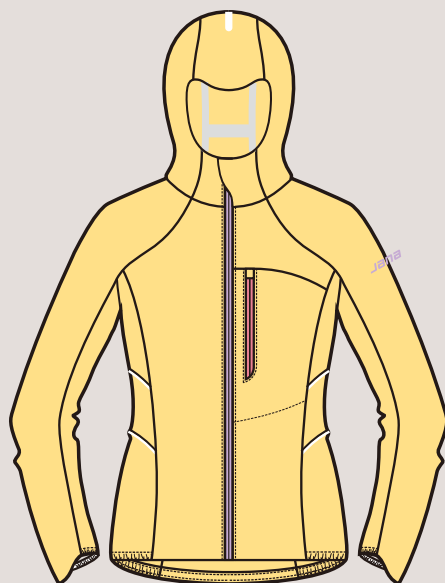
Fabric: 23W-1036
Composition: 100%Nylon Ribstop
Mechanical Weft Stretch
Finish: C0 DWR(80/10), W/P(12000),
MVP(6000)

M's Primrose Jacket

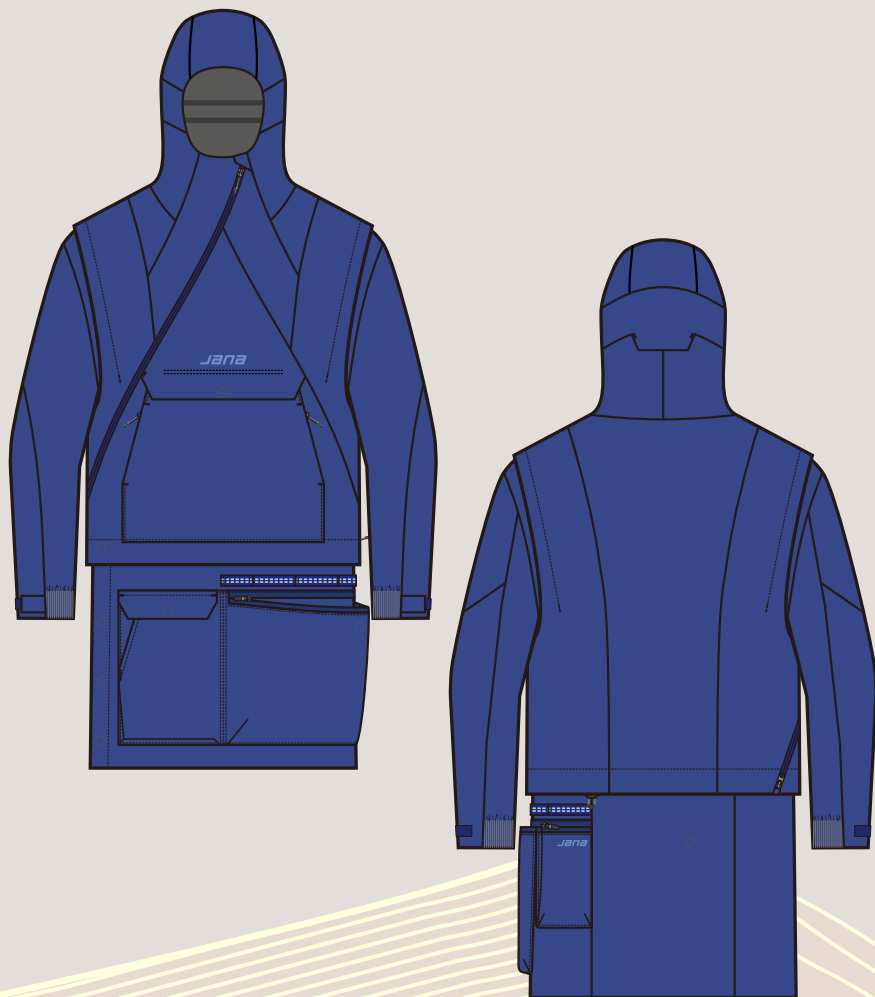
-23A060084

-Features-

- * Women's lightweight, stitchless 2.5L jacket made from Xpore recycled polyester fabric with great waterproofness and moisture vapor permeability
- * One-piece chin guard for a neat appearance
- * Large mesh-lined chest pocket doubles as a packable sac
- * Layering flaps on the side panel provide excellent ventilation
- * Concealed laser-cut hood adjustment
- * Elastic band on the back hood, cuffs, and side hem for a better fit and lighter weight
- * Pre-bending sleeves and curved cuffs for an articulated fit



Fabric: 23W-1037
Composition: 100%Polyester Recycle
Plain Machancal Weft Stretch
Finish: C0 DWR(80/10), W/P(12000), MVP(6000)

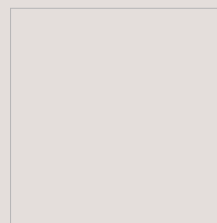


M's Rhus Jacket

-24A030061

-Features-

- * Men's 3L high-performance versatile 3-in-1 jacket
- * Removable sleeves and bottom skirt featuring YKK zippers
- * Extremely slanted CF zipper and design lines to present a modern look
- * Front chest upper pocket with kangaroo hand pockets for personal items
- * Elastic cuff with welded ladder-shaped adhesive film for a better fit and distinctive look
- * Detachable bottom skirt that can double as a craft apron, secured with magnet snaps
- * Bottom skirt equipped with woven tape loops for tool hanging
- * Bottom skirt features a variety of utility pockets, enhancing storage capacity



Fabric: 24W-1006(庫存布)

Camping/Multi-functional

M's Sissoo Jacket -24A030062



-Features-

- * Men's 2L high-performance jacket with excellent breathability and waterproofing features
- * Detachable 3L hood with Velcro closure, convertible with different hood options:
 - One with Optivision hood system provides excellent peripheral vision
 - One with 3D-adjustable hood follows the movements of your head
- * Patched 3L low-profile bellow chest pocket with zippers in a clean finish
- * Positioning of the pockets keeps them accessible and useful when wearing a backpack
- * Adjustable sleeve cuff with soft velcro hook and loop
- * Packable in the large bellowed back pocket, with loops to attach the removable strap as a crossbody bag
- * Removable 3-point carrier system inside the jacket
- * 2 internal pockets to store extra belongings

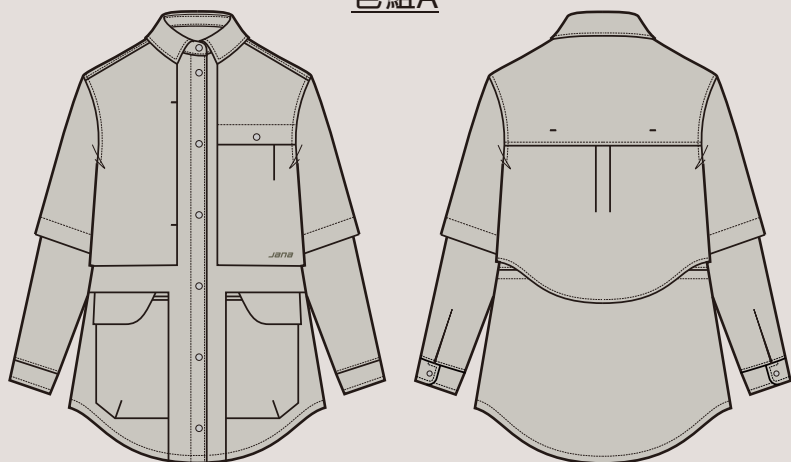
Fabric: 24W-1007
Composition: 52%Recycled Polyester
+48%Polyester Ribstop Full Dull
Finish: C6 DWR (80/10), W/P(20000),
MVP(10000)

Fabric: bnSPL100VF(庫存布)
Composition:
67%Nylon6+33%Polyester

Camping/Multi-functional

W's Acacia Shirt -24A030063

色組A



色組B



-Features-

- * Women's softshell shirt with loose-fitting features an additional layer of overlapping fabric at the back
- * Pleats on the cuffs provide increased mobility and extra room for movement
- * Detachable sleeves allow for customizable length
- * Breathable overlay construction at the back provides ventilation and ensures comfortable wear
- * The waist adjustment system ensures a more slim fit
- * Various pocket designs not only add to the overall style but also enhance storage functionality

(色組A)

Fabric: 24W-1008
Composition:
85%Nylon+15%Spandex

(色組B)

Fabric: 24W-1009
Composition:
85%Nylon+15%Spandex

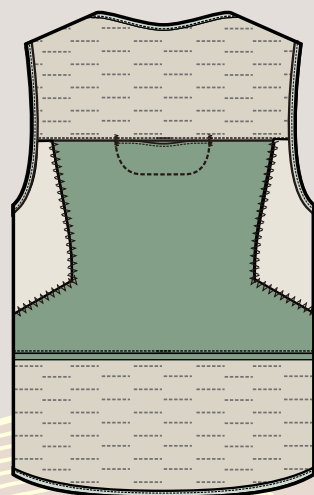
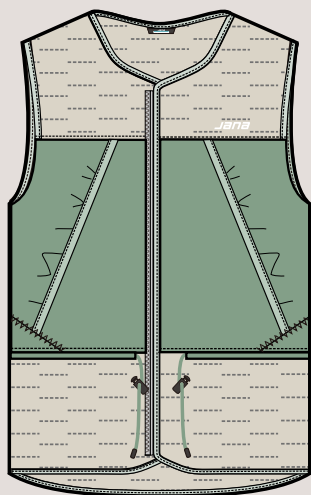
Camping/Multi-functional

Unisex Tipu Vest

-24C030064

-Features-

- * A color-blocking design blends sportswear and workwear styling in this compressible utility vest
- * Filled with lightweight duck down (90/10) for optimal body climate
- * Fleece at the back dorsal parts provides better comfort and warmth
- * Decorative zig-zag stitching at the center front and contrast color flat-lock at the cutline lend a trendy style
- * Two side pockets with elastic binding are included for personal items
- * A packable power mesh pocket at the upper back ensures easy carrying
- * Cord adjustment at the waist ensures a better fit and gives a vivid look
- * Hem and armhole with elastic binding offer a simple style

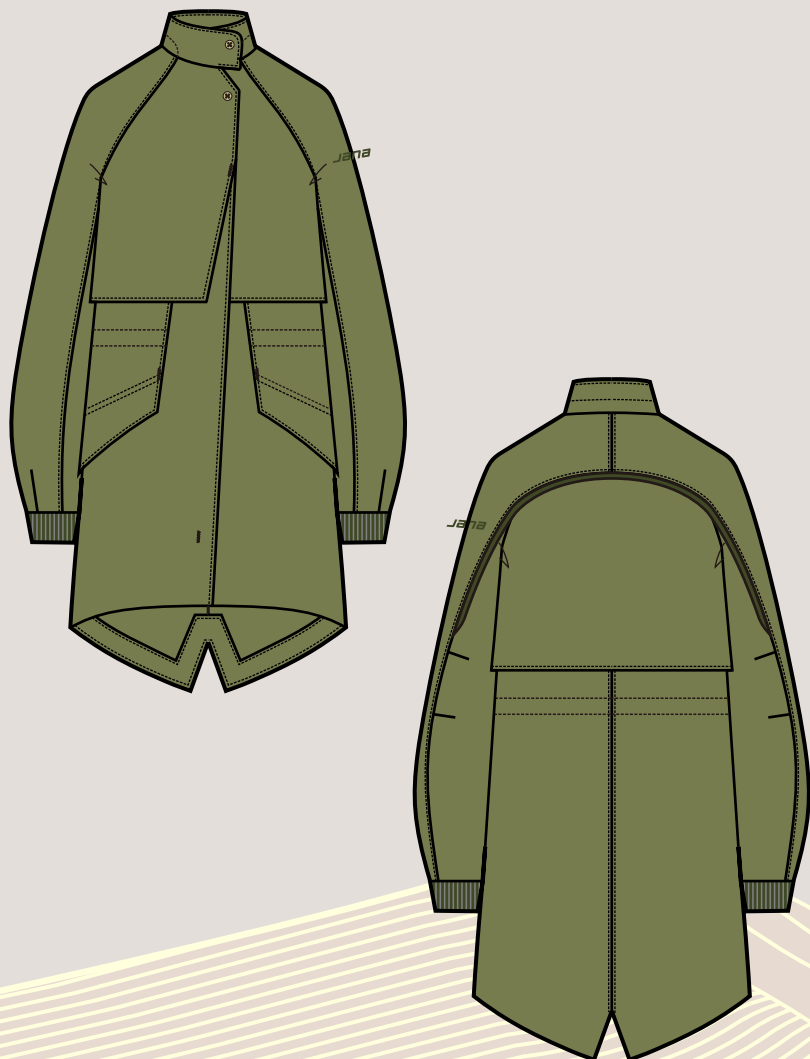


Fabric: 24W-1010
Composition:
87%Nylon6+13%Spandex
Finish: C0 DWR, Tube Fabric,
Fiber Proof

Fabric: 24W-1011
Composition: 100%Nylon
Finish: WR, Peach

Camping/Multi-functional

W's Olneya Coat -24A030065



-Features-

- * Women's functional urban coat crafted with a high-performance 2L fabric that offers durability and comfort
- * Asymmetrical center front design lending a contemporary and edgy vibe to the overall aesthetic of the coat
- * Integrated darts on the sleeves provide extra room for movement
- * Mesh fabric under the flap for ventilation and breathability
- * Button detachable hood with front hood adjustment allows for a customized fit
- * Inner waist adjustment for a clean and neat appearance, enhancing the silhouette of the piece
- * Equipped with rib cuffs for a better fit, offering optimal warmth and protection against the elements

Fabric: bnSPL75ES(庫存布)

Composition: 100% Polyester

Urban/Life-style